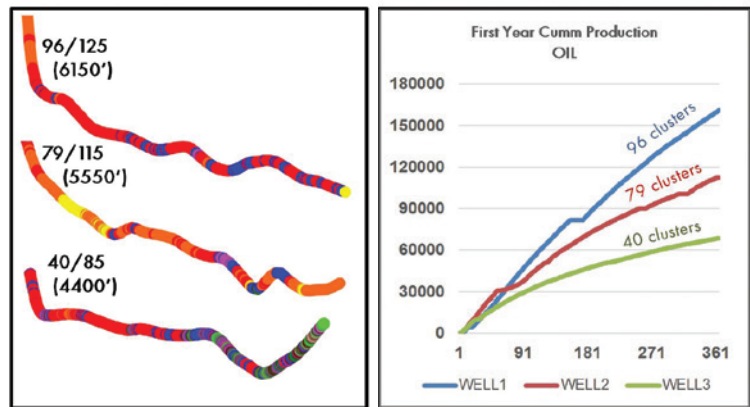


LATERALSCIENCESM ENGINEERED COMPLETIONS

A practical solution for every well to improve reservoir recovery

C&J Energy Services' LateralScienceSM process provides a reliable, cost-effective answer product that delivers the information necessary for successful completion placement on every well. This value-added technique enables operators to engineer the completion design using existing drilling data on every completion, whether a new well or a refracture operation, resulting in significant productivity improvement without any significant increased cost or additional wellsite activity.

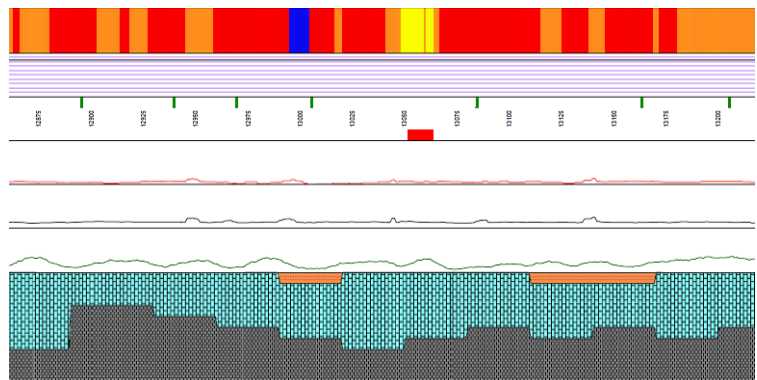
- **Cost Effective** The LateralScience process uses existing drilling data to determine completion placement. No additional data acquisition costs are required.
- **Efficient** Since existing drilling data is utilized to determine completion placement, no additional rig time, processes or equipment is needed. Operational efficiency, critical in today's market, is maintained.
- **Scalable** LateralScience's straightforward workflow makes the process deployable in high volume, multi-well applications and delivers results reliably and accurately.
- **Direct impact on your bottom line** Intelligent placement of the completion and perforations help increase production by accessing bypassed reserves in refracturing operations and optimizes your completions in new wells.



This comparison shows the dramatic heterogeneity in each wellbore and the difference between wells in the same field. Being able to optimize perforation selection will enable the operator to increase production for each stage, per well.

How is this accomplished?

LateralScience uses commonly available drilling measurements and mud motor parameters to derive Mechanical Specific Energy (MSE). The MSE parameter is a good proxy for Unconfined Compressive Strength, a valuable reservoir parameter commonly used in frac designs. The result is a facies-based answer product that enables the operator to position perforation clusters so that they breakdown at a common treating pressure, resulting in uniform fracture treatment within each frac stage.



LateralScienceSM facies plot

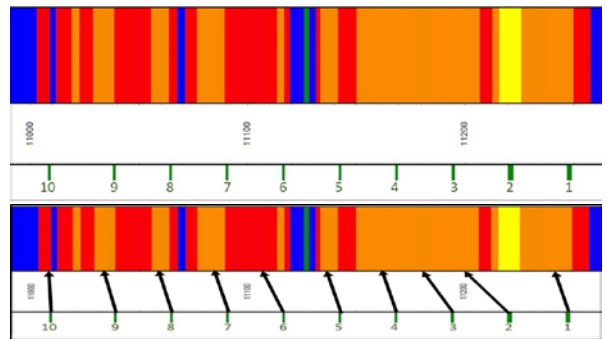
To date, LateralScience has been applied successfully on over 350 wells. It is validated through comparison to openhole wireline logs and by comparing productivity to offsetting wells or additional wellsite activity.



Part of the full suite of re-fracturing options from C&J

C&J Energy Services can provide a range of technologies tailored to help regain production and extend the life of your well. Our unmatched experience in shale plays across the country gives us the advantage to tailor a specific solution that is much more economical than drilling and completing a new well.

- Our unmatched quality and customer-first approach is a core value that we bring to every customer we do business with.
- C&J provides a full package of services for your well including wireline services through our Casedhole Solutions Division, along with a full range of coiled tubing services.
- Our engineering group and Research & Technology Division can help identify problems and provide solutions to the most challenging reservoir.
- C&J engineers and laboratory technicians can design a fluid system compatible with your particular well parameters. Our PureStim™ Fluid System can be designed to perform over a wide range of temperatures and applications.
- Safe and experienced crews are ready to help you get production online in a timely manner.



Guiding the engineered completion design. The bottom image shows the optimized perforation placement compared to the geometric design in the top image.